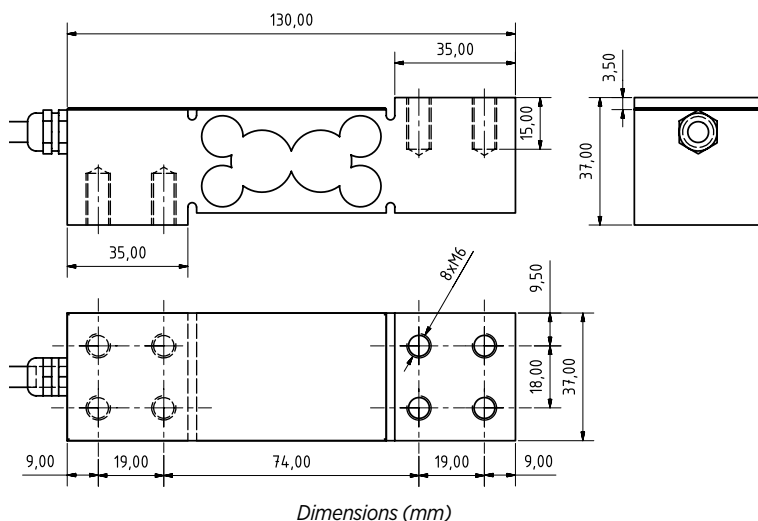


SPECIFICATIONS

| | |
|--------------------------|----------------------|
| Nominal capacities (LN) | 50-75-100-150-200 kg |
| Accuracy class | 3000 n. OIML |
| Minimum dead load | 0 %Ln |
| Service load | 150 %Ln |
| Safe load limit | 200 %Ln |
| Maximum combined error | 0,017 %Sn |
| Repeatability error | 0.015 %Sn |
| Temperature effect: | 0.01 %Sn/5°C |
| On zero on sensitivity: | 0.006 %Sn/5°C |
| Creep error | 0.016 %Sn |
| Temperature compensation | -10..40 °C |
| Temperature limits | -20..50 °C |
| Nominal sensitivity | 2±0.1% mV/V (2) |
| Nominal input voltage | 10 V (2) |
| Maximum input voltage | 15 V (2) |
| Input impedance | 386Ω±2% |
| Output impedance | 350±3Ω |
| No load output (SN) | 2 %Sn |
| Insulation resistance | > 5000 MΩ |
| Maximum deflection | 0.2-0.6 |
| Cable length | 5 m |



TPP-3

50 » 200kg Capacity

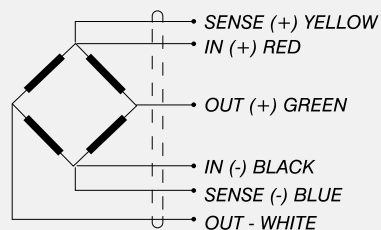
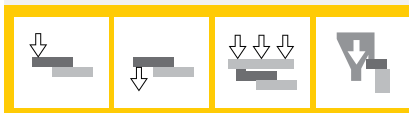
SINGLE POINT

APPLICATIONS

Bech platform up to 600x600 mm.
Hopper weighing

FEATURES

Single point load cell.
Bending beam load cell.
Fully stainless steel construction.
3000 divisions OIML R60 Class C.
Direct platform mounting.
High accuracy with off-center loads.
Low profile.
Protect against humidity IP67
(EN60529)



CE 3000d OIML Certificate No.R60/2000-ES-03.03

| Reference | Nominal capacities - Ln (kg) | Accuracy class n. OIML | y = emax / vmin | #Code |
|-----------|------------------------------|------------------------|-----------------|--------|
| TPP-3/50 | 50 | C3 | 9433 | 710236 |
| TPP-3/75 | 75 | C3 | 9433 | 710237 |
| TPP-3/100 | 100 | C3 | 9433 | 710238 |
| TPP-3/150 | 150 | C3 | 9433 | 710239 |
| TPP-3/200 | 200 | C3 | 9433 | 710240 |