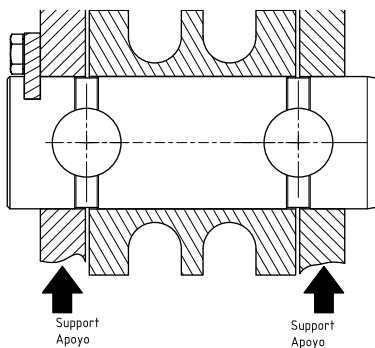
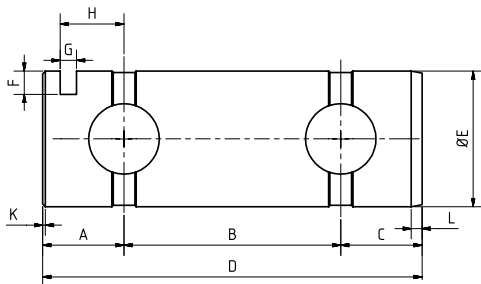




### SPECIFICATIONS

Nominal capacities (N.L)	xxxxxx kg
Accuracy	0,50%
Input impedance	$386\Omega \pm 2\%$ ó $766\Omega \pm 2\%$
Output impedance	$350 \pm 3\Omega$ ó $700 \pm 3\Omega$
Input voltage range	5..12 V
Nominal sensitivity	1mV/V
Operating temperature range	-10 a +50°C
Service load	150% (N.L.)
Safe load limit	>400 % (N.L.)
Sensitivity tolerance	+/- 0.1% (N.L.)
Temperature effect on zero (-10...+40°C):	<+/- 0.001%/°C
Temperature effect on zero (-10...+50°C):	<+/- 0.002%/°C
Maximum combined error	<+/- 0.02 (N.L.)
Creep in 30' at 20°C	+/- 0.02%
Cable length	xxxxxx m
Electrical connection a	xxxxxx

\*xxxxxx= Customer requirements



Dimensions (mm)

## TB CUSTOM

### SPECIALS

#### APPLICATIONS

Overload protection.  
Monitoring of security forces and industry measurement.  
Cranes.  
Tension control on conveyor belts.  
Trucks.

#### FEATURES

Double shear beam load cell.  
Easy to install.  
Economical solution to the problems of weighing and measuring.

#### CUSTOM MADE TO THE CUSTOMER

##### REQUIREMENTS:

- Electrical connector 4-20mA.
- Hermetically sealed up to IP68.
- 4-20mA output integrated in the load cell body.
- 4-20mA output by external plastic ABS enclosure.



MULTIPLE OPTIONS UNDER DEMAND